

# AquaBay M3-1U Liquid Tank

P/N : CL-W0031 Application 5.25" drive bay

1.

01890

## Installation

### Limited Liability

These warranties replace all other warranties, expressed or implied including, but not limited to, the implied warranties of merchantability and fitness for a particular purpose.

Thermaltake disclaims all other warranties, expressed or implied including, without limitation, implied warranties of merchantability and fitness for a particular purpose.

Some jurisdictions do not allow the exclusion of implied warranties so this limitation may not apply to you. All expressed and implied warranties are limited in duration to the limited warranty period. No warranties apply after that period, some jurisdiction do not allow limitation on how long an implied warranty lasts, so this limitation may not apply to you.

Limitations of liability, Thermaltake's responsibility under this, or any other warranty, implied or expressed, are limited to repair or replacement, as set forth above. These remedies are the sole and exclusive remedies for any breach of warranty. Thermaltake is not responsible for direct, special, incidental, or consequential damages resulting from any breach of warranty or under any other legal theory including, but not limited to, lost profits, downtime, goodwill, damage to or replacement of equipment and property, and any cost of recovering, reprogramming, or reproducing any program or data stored in or used with a system containing Thermaltake product. Some jurisdictions do not allow the exclusion or limitation of incidental or exclusions may not apply to you.

Extent of limited warranty, Thermaltake does not warrant that your product will be free from design defects or errors known as "ERRATA". Current characterized errata are available upon request. This limited warranty does not cover any costs relating to removal or replacement of any part that is soldered or otherwise affixed to your system's motherboard. This limited warranty does not cover damages due to external causes, including accidental, problems with electrical power, usage not in accordance with product instructions, misuse, neglect, alteration, repair, improper installation, or improper testing. Nor is Thermaltake held liable for any bodily damage that may result during the installation, maintenance, repair, or is otherwise associated with this product, Thermaltake is free from any legal actions that may result in death, pain and anguish, or any other form of personal damage that may occur by purchasing this product.

You, the buyer, agree to this warranty and its term set within its expressed and implied limited warranty. This limited warranty gives you specific legal rights, and you may also have other right that varies from jurisdiction to jurisdiction.

### Components checking >>

A. Connectors (ID 6.4mm . 9.5mm)

B. AquaBay M3-1U Liquid Tank

C. Tube (ID 6.4mm UV tube)



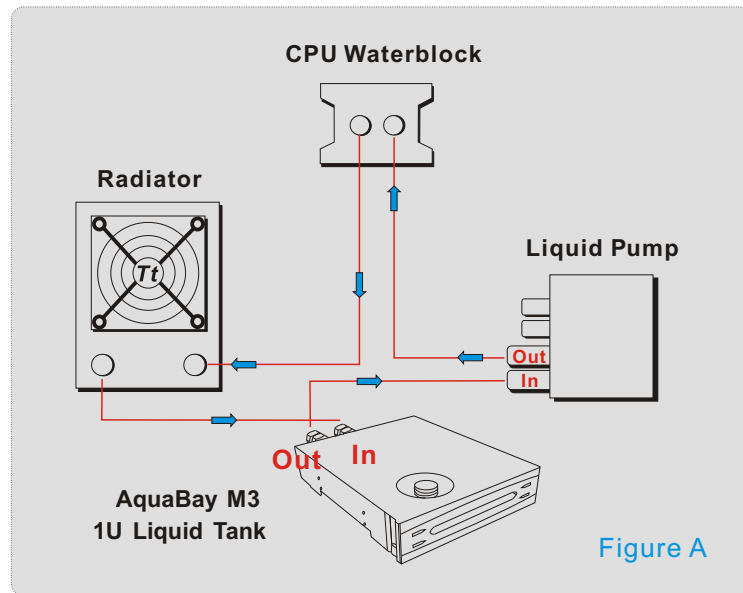
**Tt Thermaltake**  
COOL ALL YOUR LIFE

www.thermaltake.com 2005.06

# AquaBay M3-1U Liquid Tank

P/N : CL-W0031 Application 5.25" drive bay

## Apply AquaBay M3 to BigWater



### A. Install the AquaBay M3 into your chassis >>

Attention: Label "in" means inlet / label "out" means outlet



With Thermaltake Armor Chassis



Take ID 6.4 mm quick install connectors and rotate them into the location shown on photo



Take apart the nut of the quick install connector fixed on the inlet of tank and insert it into the UV tube



Connect the UV tube with the AquaBay M3 through rotating the quick install connector on the inlet. Do the same action that mentioned above for the outlet of tank



Remove the relocate-able front control panel. Insert the AquaBay M3 into the driver bay's space

### B. Upgrade BigWater through AquaBay M3 >>

#### Step1 : How to install AquaBay M3 to upgrade your BigWater



BigWater's layout is shown above



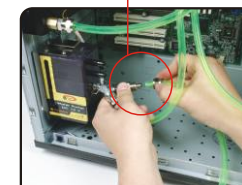
Take apart components of BigWater and pour out the liquid



Take apart the UV tube from the outlet of radiator



Use the UV tube from the inlet of AquaBay M3 to connect to the outlet of radiator (please see Figure A for detail information)



Unscrew the connectors from the inlet of pump and take apart the UV tube



Take the UV tube from outlet of AquaBay M3 and insert the tube through the nut to connect the outlet of AquaBay M3 and inlet of pump

# AquaBay M3-1U Liquid Tank

P/N : CL-W0031 Application 5.25" drive bay

3.

## Step 2 : How to fill the Coolant into AquaBay M3



Pull AquaBay M3 and open the cover of the tank to fill the coolant to the high scale of front panel

## Step 3 : How to fill the Coolant into the Pump



Release the screw of the steel plate



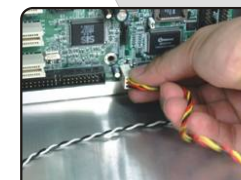
Remove the steel plate



Open the cover of liquid pump



Fill the coolant into the pump to scale between the low and the high scale



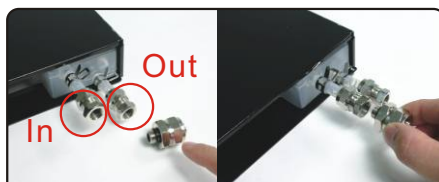
Connect the 3-pin connector of pump to motherboard

Attention :If the liquid level is below the low scale after insert the power, please follow the steps of filling liquid to ensure the optimal liquid circulation

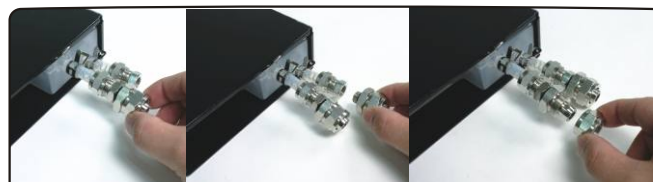
## Apply AquaBay M3 to the other liquid cooling system

A. Check connectors: Before assembling AquaBay M3, please rotate on the compatible Quick Install Connectors and tube to fit your liquid cooling system. If the system applies to ID 9.5 mm Quick Install Connectors and ID 9.5 mm tube, please follow the steps mentioned below >>

### Step 1: Install Quick Install Connectors



Take the ID 9.5 mm quick install connectors and rotate them into inlet of tank shown on photo

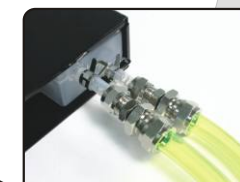


Do the same action for the outlet of tank to rotate on ID 9.5 mm quick install connectors

### step 2: Connect the UV tube and Quick Connectors



Take apart the nut of quick install connector shown on photo and insert the nut into the UV tube



Do the same action for the outlet of tank

# AquaBay M3-1U Liquid Tank

P/N : CL-W0031 Application 5.25" drive bay

4.

## B. Install the AquaBay M3 into your chassis >>

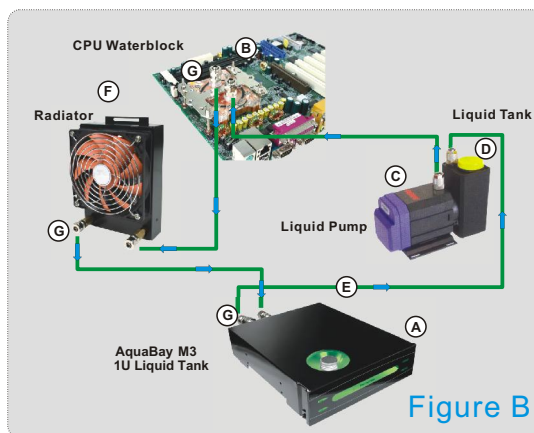


With Thermaltake  
Armor Chassis



Remove the relocate-able front control panel. Insert the AquaBay M3 into the driver bay's space

## C. Combine AquaBay M3 with the other liquid cooling components >>



You can install the liquid components shown below to make up a liquid cooling system:

- A. Thermaltake AquaBay M3
- B. Thermaltake CPU Waterblock (CL-W0010)
- C. Liquid Pump
- D. Liquid Tank
- E. ID=9.5 mm tube
- F. Thermaltake 12 cm Radiator
- G. ID 9.5 mm quick install connector

Figure B

Installation