



7" LCD Monitor

User's Manual



All other registered trademarks belong to their respective companies.
© 2006 Thermaltake Technology Co., Ltd. All Rights Reserved. www.thermaltake.com



Thermaltake
COOLall YOUR LIFE
www.thermaltake.com

Catalogue

1.Caution	03
2.Components Check	04
3.Instruction of the Panel Key	05
4.Instruction of Remote	06
5.Operation of the Front Panel	07
6.Specification of the Features	08
7.LCD monitor Installation	09
7-1 Installation for Mozart TX VE1000Series	09
7-2 Installation for LANBOX VF1000series	11
7-3 Uninstallation for Mozart TX VE1000Series	13
7-4 Uninstallation for LANBOX VF1000series	15
8.Instruction for Connection	17
9.Install Touch Panel Driver	18
10.Operation of the Touchpad	22
11.Simple Troubleshooting	23



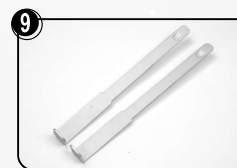
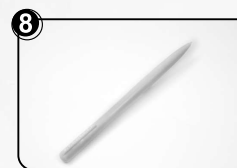
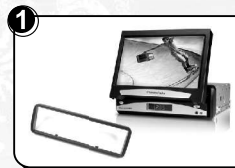
1. Caution:



1. This product is for PC used only. Not for car usage.
All the TV functions are for reference only.
2. Please read the user's manual before operating this product.
3. Monitor should be avoid suffering humidity, dust, steam, lampblack and direct beam of the sunshine.
4. Do not use detergent or other chemic preparation when cleaning the product, please use clean soft cloth.
5. Please avoid touching the surface of the monitor by rigid object in case of scraping the surface
6. Do not touch the monitor by nail or spiky rigid object when operating the touch panel, please touch it by being matched touch pen.



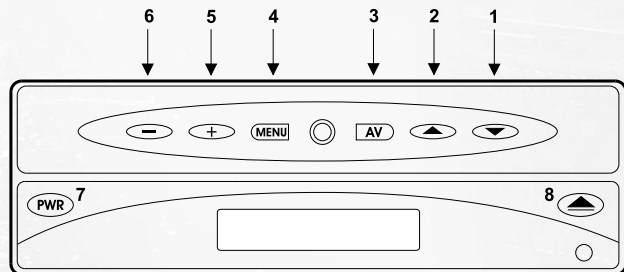
2. Components Check



- ① 7" Monitor device and Frame
- ② Remote Control
- ③ CD Driver for Touchpad
- ④ User's Manual
- ⑤ VGA connection Cable
- ⑥ Power connection Cable
- ⑦ USB Cable
- ⑧ Touch Pen
- ⑨ Device removing Tool

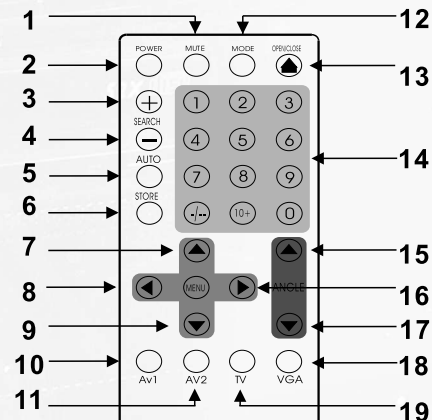


3. Instruction of the Panel Key



- 1. DOWN:** Key of Open and Close
- 2. UP :** Key of Turn up
- 3. AV/TV :** Key of Turn down
- 4. MENU:** Reducing Key of Simulate
- 4. +:** Menu
- 6. - :** Increasing Key of Sminulate
- 7. POWER:** Power
- 8. OPEN/CLOSE :** AV/TV Switch

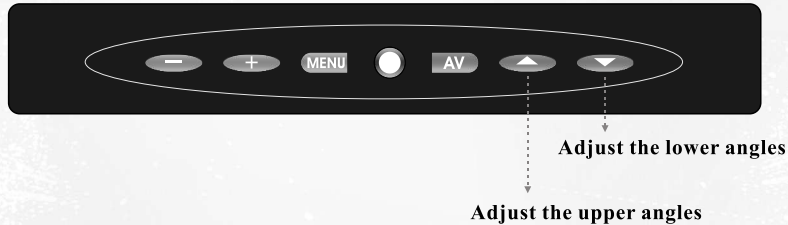
4. Instruction of Remote



- 1.** Mute;
- 2.** Power;
- 3.** "+" for TV select;
- 4.** "-" for TV select;
- 5.** TV auto select
- 6.** TV storage;
- 7.** "+" for Simulate;
- 8.** "-" for volume;
- 9.** "-" for Simulate;
- 10.** AV1 Switch;
- 11.** AV2 Switch;
- 12.** Auto Switch for Simulate;
- 13.** Key for open and Close;
- 14.** TV Select;
- 15.** Key for Upping panel;
- 16.** "+" for Volume;
- 17.** Key for Downing Panel;
- 18.** Key for VGA Switch;
- 19.** Key for TV Switch;



5.Operation of the Front Panel



Operating the Main Menu

Press "MENU" to enter the main menu. Press "-" to advance in the menu and press "+" to reverse in the menu. After finding your desired choice, press "MENU" to select your choice. After the menu has turned from white to yellow, go ahead and press the "+" and "-" buttons to adjust.



6.Specification of the Features

Part of Monitor:

-Type:	EDTC18QEF;
-Display:	Mode 16 9
-Resolution:	800 X 480 X RGB
-Pixel:	0.06 X 0.18
-Valid Display Area:	7 INCH
-Brightness :	400
-Contrast:	250
-View Angle:	40 degree in Horizontal 30 degree in Vertical
-Working temperature:	0-50 degree

Part of Touch panel:

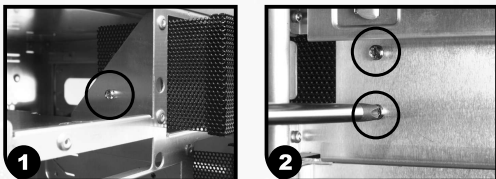
-Type:	Simulative four wire resistance
-Thickness:	1.4mm
-Transparent Rate :	82
-Rigidity of Surface :	there are 2H-3H to prevent scraping
-Linearity:	<+/-1.5%
-Working Life of signal dot:	more than 5000 thousand times
-Operating Temperature:	-10 degree to 50 degree
-Operating humidity:	15% to 85%



7.LCD monitor Installation

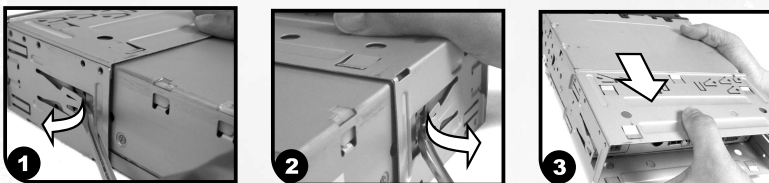
7-1 Installation for Mozart TX VE1000Series

Step1



Unscrew the both side screws of 7"drive bay cover.

Step2



Pull out the both side clips then remove the cage one the 7" drive bay monitor.

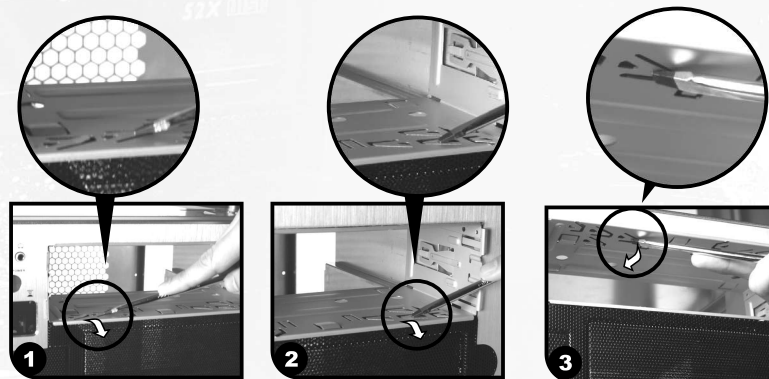
Step3



Install the 7" cage onto the 7" drive bay



Step4



Push all the metal clips to fix the cage.

Step5



Insert the 7" device

Step6



Install the frame.



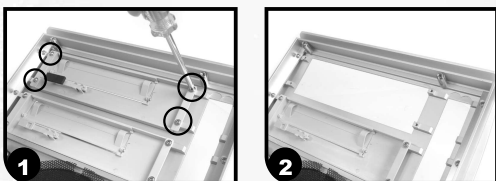
7-2 Installation for LANBOX VF1000series

Step1



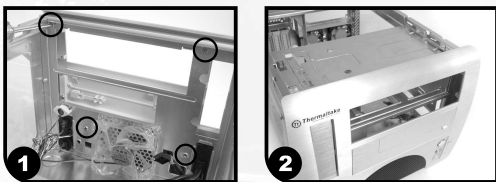
Please remove the 4 screws as shown.

Step2



Unscrew the 7" drive bay cover screws as shown.

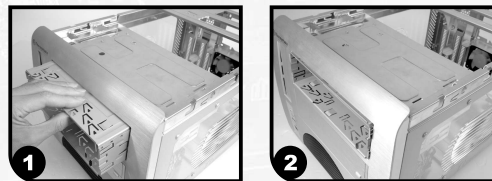
Step3



Remove optical drive tray then secure front panel with 4 screws as shown

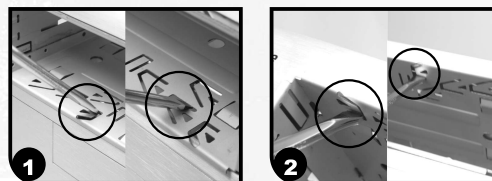


Step4



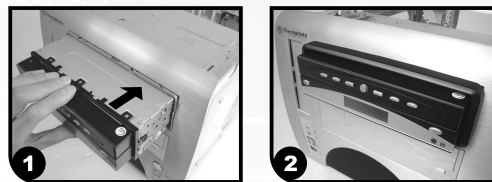
Install the 7" cage onto the 7" drive bay

Step5



Push all the metal clips to fix the cage.

Step6



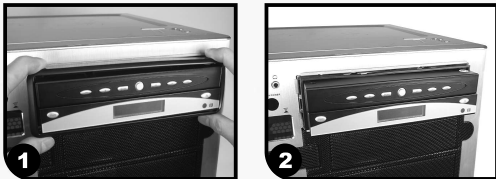
Insert the 7"device.

Install the frame.



7-3 Uninstallation for Mozart TX VE1000Series

Step1



Remove the frame as shown

Step2



Insert the device removing tool as shown

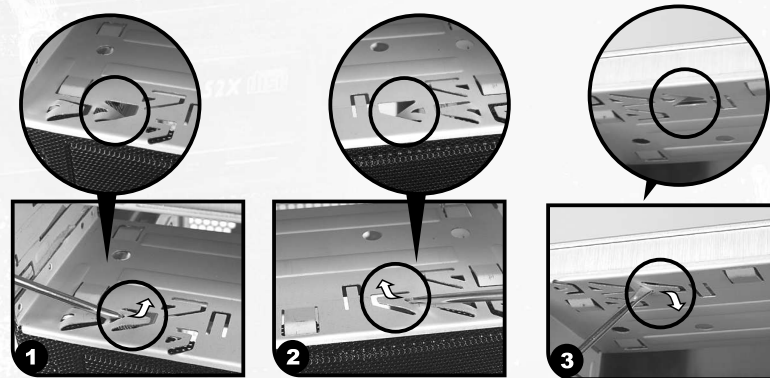
Step3



Pull out the 7" drive bay as shown

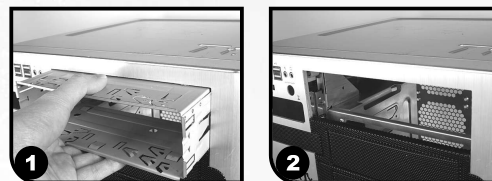


Step4



Pull back all the metal clips for removing the cage

Step5



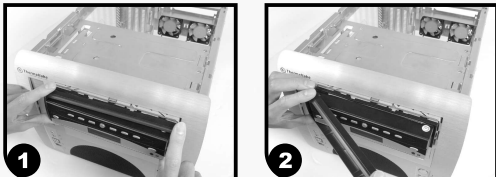
Pull out the Cage

Finish uninstallation



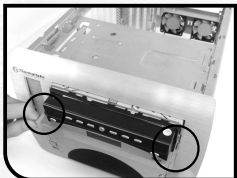
7-4 Uninstallation for LANBOX VF1000series

Step1



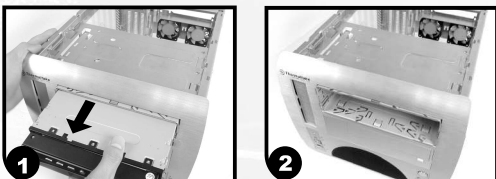
Remove the frame as shown.

Step2



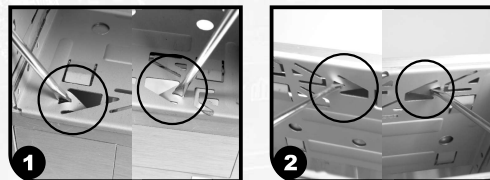
Insert the device removing tool as shown.

Step3



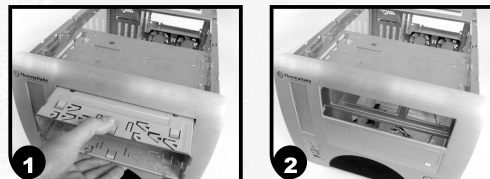
Pull out the 7"drive bay as shown.

Step4



Pull back all the metal clips for removing the cage.

Step5

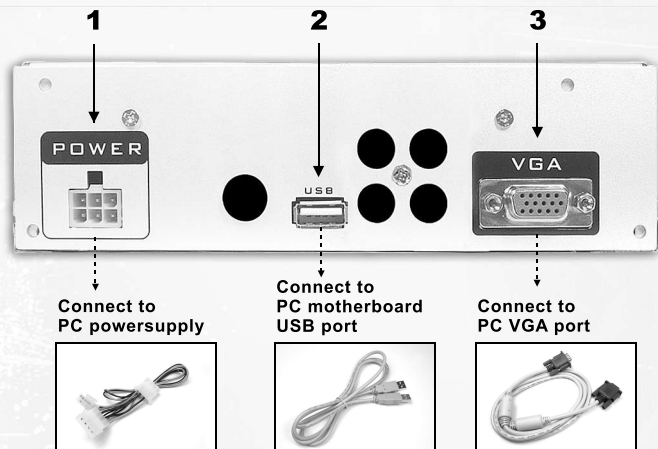


Pull out the Cage.

Finish uninstallation.



8. Instruction for Connection



1.Input port for Power:

Connect to PC power supply

2.USB Port:

Connect to PC USB port

3.VGA Port :

Connect with exterior port of PC display



9. Install Touch Panel Driver

WorcolTouch is software, which contains drivers of the touch panel controllers for the specified communication connectors, RS232, PS/2 and USB, and the other two utilities. **Follow these steps to install WorcolTouch**

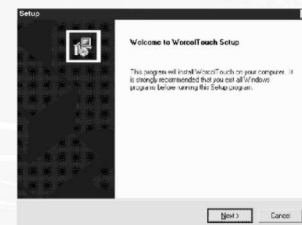
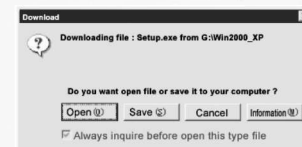
- 1.put the WorcolTouch CD to CD-Rom.
- 2.double click the Setup.exe,the windows starts to run the installation program. Notice that do not plug the USB controller on the system before the system before the installation has been finished.

- 3.select **Windows 2000/XP** to install.

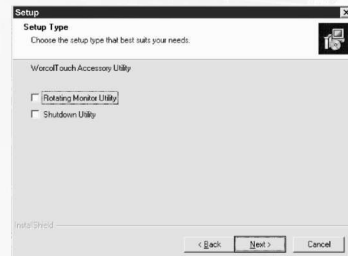
- 4.Just click [**open**] button to continue installation.Notice that do not click [**save**] button.

- 5.Just click [**Next>**] button to continue installation.

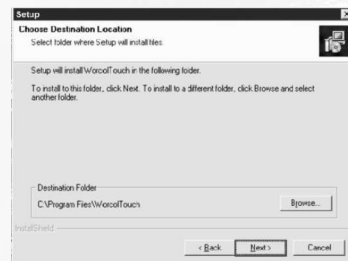
- 6.Check the check box if PS/2 touch controller is to be installed. The default setting is unchecked. The press [**Next>**] to continue instation.



7. Choose the setup type that best suits your needs. There are two WorcolTouch accessory utilities for choosing, **Rotation Monitor Utility** and **Shutdown Utility**. Users can install the utility they want by checking the box. Alternatively, you don't need to choose any one of them, then press **[Next>]** to continue installation.



8. Select the appropriate folder where set-up files will be installed, then press **[Next>]** to continue installation.



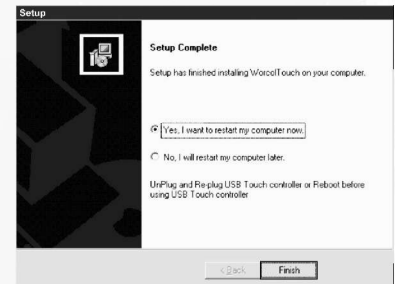
9. The type in the name of program folder for WorolTouch or press **[Next>]** to continue. There will be a default name for it.



10. During Installation, the WorcolTouch controller driver will be installed automatically. Windows XP will prompt a warning message before driver certification. Now, press **[Continue>]** to continue installation.



11. Windows is copying files to disk and the setup is complete. After finish the installation. If PS/2 touch controller is installed, it needs to **reboot** the computer.



12. After WorcolTouch installation, Unplug the USB touch controller into the computer, Hardware wizard finds this hardware, press **[Next>]**.



10. Operation of the Touchpad

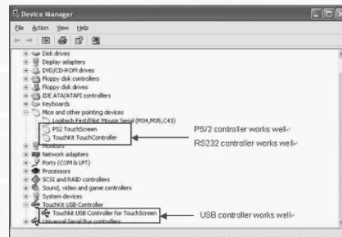
13. It will search the proper driver for the WorcolTouch controller device and install it automatically.



14. After the driver is installed, Press [Finish>] to complete the USB device installation.



15. Users can check the situation of controllers in the Device Manager. If the controller is set up well, There will be messages as the following picture.

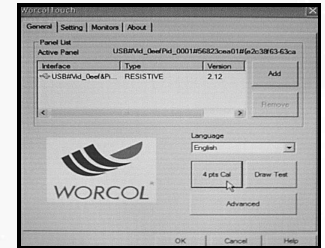


Notice:

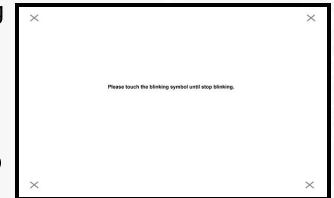
Please set the monitor resolution of computer to 640*480, and set renovate frequency to 60Hz before connect the touch screen.



- Install the driver of the touchpad as instructed in the section of "9.Install Touch Panel Driver".
- Restart the computer, connect the display, and double-click on "Worcoltouch" on the desktop. There should be several buttons in the device controller such as "Interface", "Type", "Version", and other related messages. If the box is blank, it means the USB device is not connected proper or there are other errors.



- The first time using (or re-calibrating the H-position and V-position in the future) the device, please use the 4-point calibration first. Click on "4 Pts Cal" and use the touchpen to tap on the four red "X"s in the corners until all points turn green.



- Then, engage the 25-point calibration by clicking on the "Advanced" button and selecting "25 Pts Cal". Calibrate the touchscreen again by tapping on the 25 red "X"s until they turn green.



11.Simple Troubleshooting

Q:

It hung and nothing operates.

A:

Reset the unit by disconnecting the power to the computer completely for 5 minutes.

Q:

The touchpad is inaccurate.

A:

Re-calibrate the touchpad with the 4-point and 25-point calibrations.

Q:

Monitor can not be displayed.

A:

Please refer to the section 3 of "Instruction of the panel key", press "AV" key to select the channel of "PC". (There will be 5 channels: **Video1**, **Vedio2**, **TV1**, **TV2** and **PC**.)

