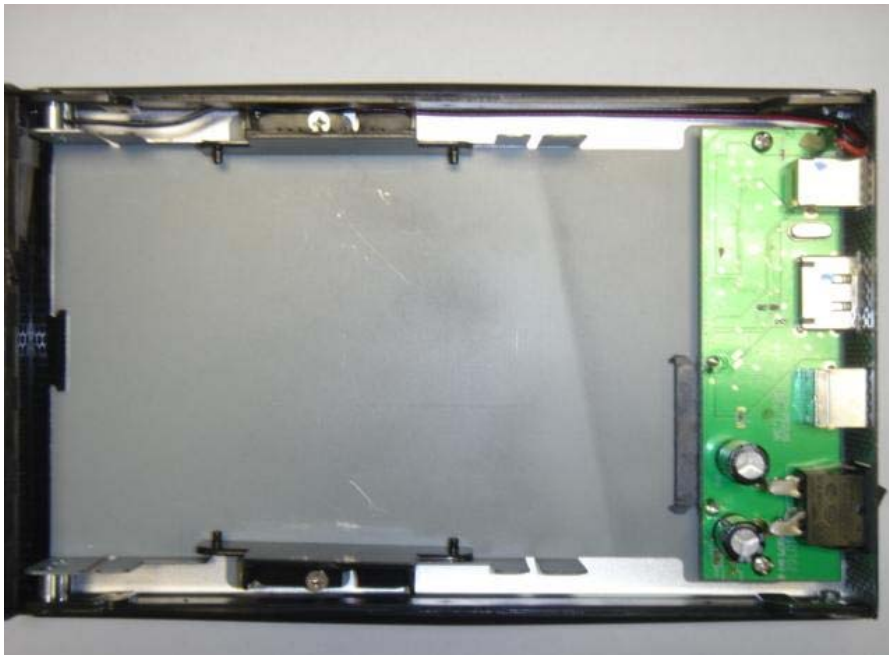


Max4 eSATA and USB installation

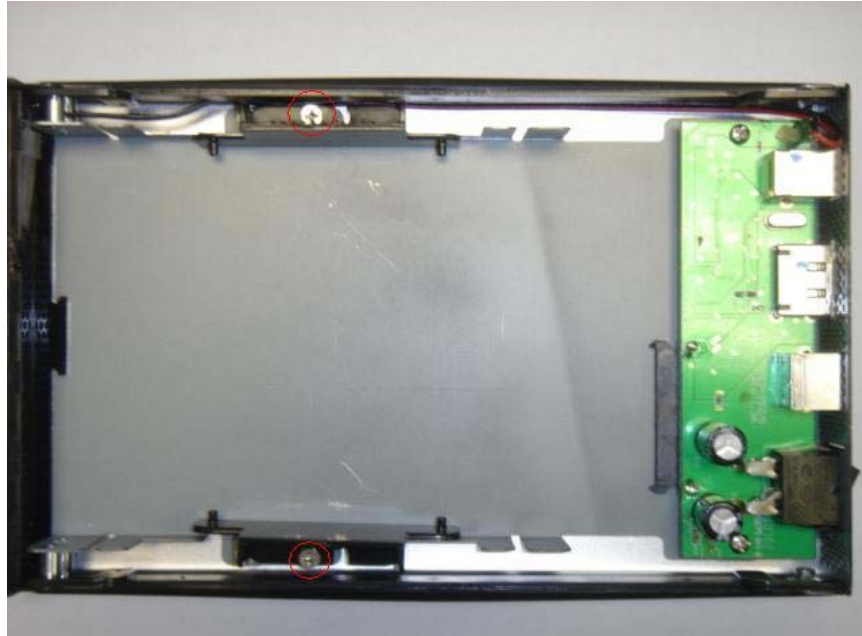
- 1) The harddrive must look like the drive in the pic below.



- 2) The top of the enclosure looks like this when opened.



- 3) Disconnect the plastic pieces by unscrewing the screws.



- 4) Attach the plastic pieces to the HDD.



- 5) Slide the HDD into the SATA connection of the enclosure.



- 6) When installed the drive will look like this.

